



**SUSPENSION ACCESSORIES CAMPING**









# BULL BARS

AUSTRALIAN DESIGNED AND ENGINEERED

- Airbag compatible
- Compatible with vehicle safety systems
- ADR certified and tested
- Designed using 3D scan technology
- Made from highest quality SPHC grade steel (except premium alloy bull bar)
- CNC laser cut and robot welded
- Powdercoated with AKZO NOBEL powder
- LED parker / indicator included
- Aerial and light mounts
- Winch compatible



COMMERCIAL  
50mm loop bar



COMMERCIAL  
DELUXE  
50mm loop bar  
with fog lights



PREMIUM DELUXE  
60.3mm loop bar  
with fog lights



PROTECTOR  
75mm inner  
and 50mm  
outer loop bars



PROGUARD NO LOOP  
Single or triple loops  
available



PROGUARD SINGLE LOOP includes  
overrides



PROGUARD TRIPLE LOOP includes  
overrides



- Supplied as a pair
- NATA tested and approved
- Compatible with 4.7T shackle

## TO SUIT:

Ford Ranger / Everest  
Mazda BT50 2011+

Nissan NP300 / D40 Navara 2005+

Toyota Hilux / Fortuner 2015+

Toyota Prado 150 2009+

Toyota Landcruiser 79 2007+

Toyota Landcruiser 200 2007+



## LED FOG LIGHT UPGRADE



### SUIT IRONMAN 4X4 BULL BAR LIGHT PODS

- 2 x 5W high efficiency LEDs
- IP69 rated sealed housing
- Shatterproof polycarbonate lens
- ECE R19 compliance





## TOWING ACCESSORIES

### TOW BAR WIRING LOOMS

- German made
- OEM style connectors
- CAN bus compatible
- Includes 7 pin flat plug
- Plug and play



### REAR PROTECTION TOW BAR PLATES

- Provides additional grip when using as a step
- Steel construction with a textured black powdercoated finish



## REAR PROTECTION TOW BAR

PROTECT THE REAR OF YOUR 4X4 UTE WITH AN IRONMAN 4X4 STEEL PROTECTION BAR

- Constructed from 4mm steel, with 8mm tow bar sub frame
- ADR and Australian standards compatible
- Dynamic and static testing to 3500kg
- Integrated tow bar
- Includes tow hitch, pin and 50mm 3500kg tow ball
- Protected trailer and Anderson Plug location
- LED numberplate lights







# SIDE STEPS AND RAILS

- Heavy duty steel construction with black powdercoated finish
- Checkerplate step treads
- Available in standard 50mm or heavy duty premium 60.3mm tube
- (Premium not available on all models)
- Airbag compatible

## Side Steps

Standard 50mm tube

## Steps / Rails Combo

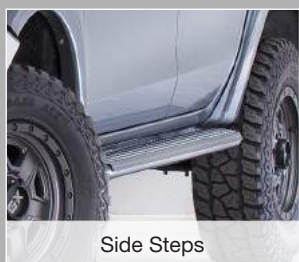
Standard 50mm tube

## Side Steps

Premium 60.3mm tube

## Steps / Rails Combo

Premium 60.3mm tube



Side Steps



Side Steps / Rails Combo



Side Steps / Rails Combo

# AIRFORCE SNORKEL



**5 YEAR  
WARRANTY**



DESIGNED AND  
TESTED IN AUSTRALIA

- Raised air intake for cleaner air and safer water crossings
- UV stabilised polyethylene (LLPDE)
- Ram head with built-in rain deflector
- Increased airflow for improve performance
- Dyno tested for improved air intake



SNORKEL MESH

CHECKERPLATE TREAD







# MONSTER WINCH



- Designed to fit most winch compatible bull bars on the market
- High speed balanced motor with sealed bearings
- Repositionable clutch handle
- IP68 rated
- External remote motor breather
- Integrated anti-tamper power cut off
- Fully sealed competition style solenoid
- All in one wireless/plug in controller with LED torch



SYNTHETIC ROPE AND ALLOY FAIRLEAD

9500lb Winch

12000lb Winch



## WINCH PACKAGE INCLUDES

WINCH DAMPER



WIRELESS / PLUG-IN CONTROLLER



EXTERNAL REMOTE BREATHER



COMPETITION STYLE SOLENOID



STEEL CABLE AND ROLLER FAIRLEAD  
9500lb Winch

12000lb Winch







## LARGE RECOVERY KIT

- 9m x 8000kg snatch strap
- 20m x 4500kg winch extension
- 3m x 12000kg tree trunk protector
- 5m x 8mm drag chain
- 2 x 4.7t bow shackles
- Snatch block
- Leather gloves
- Kit bag



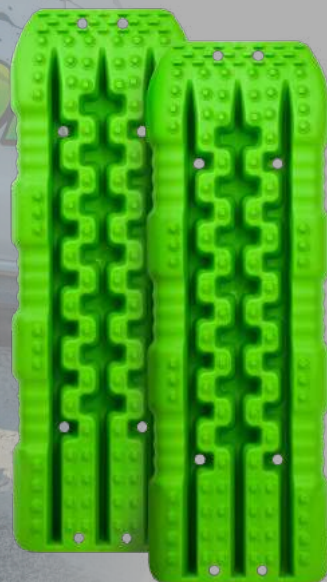
## SMALL RECOVERY KIT

- 9m x 8000kg snatch strap
- 2 x 4.7t bow shackles
- Rated recovery hitch
- Leather gloves
- Kit bag



## TOTAL TRACTION BY TREDS

- Ultimate recovery traction aide
- Manufactured in Australia



## KINETIC SNATCH ROPE

- Designed to stretch up to 30% providing a safer recovery by reducing shock load
- Manufactured with a high strength nylon 66 (polyamide) double braid cover and abrasion resistant core
- Storage bag included



## SOFT SHACKLES

- A safer, lightweight, simple to use alternative to steel shackles
- Manufactured from; high strength, low friction, 12 strand single braid, UHMWPE rope
- Storage bag included



RECOVERY HOOK



SNATCH BLOCK



RECOVERY HITCH



ALLOY HAWSE



BUMPER LIFT KIT



TYRE LIFT KIT



4.7T BOW SHACKLE



TREE TRUNK PROTECTOR 12000kg BREAK STRENGTH

SNATCH STRAPS 8000kg BREAK STRENGTH 11000kg BREAK STRENGTH

WINCH EXTENSION 8000kg BREAK STRENGTH







160L/MIN COMPRESSOR



- 12V, 540W motor with 60mm cylinder
- 45A maximum current
- Snap-on quick release fitting
- 8m heat resistant, heavy duty hose with inline pressure gauge/deflator
- Moisture and dust resistant



90L/MIN COMPRESSOR



- 12V, 450W motor with 45mm cylinder
- 40A maximum current
- Snap-on quick release fitting
- 8m heat resistant, heavy duty hose with inline pressure gauge/deflator
- Moisture and dust resistant



**PRESSURE GAUGE**  
- Reading hold function



**SMART DEFLATOR WITH GAUGE**  
- Quick connect with pressure gauge

**DUAL INFLATOR**  
- Inflate 2 x tyres at once



**COMPACT DEFLATOR**  
- Quick connect speedy deflator



**SPEEDY DEFLATOR**  
- USA Patented  
- Accurate and easy to read pressure gauge  
- Corrosion resistant



**TYRE GAUGE**  
- Accurate pressure gauge  
- Holds pressure when removed



Self-Vulcanising  
Repair Cords

- Emergency puncture repair
- No need to remove tyre
- Quick and easy to use

## UNIVERSAL DIFF BREATHING KIT

SUITABLE FOR DIFF HOUSINGS, TRANSFER CASES, GEAR BOXES AND WINCH MOTORS



### KIT CONTAINS:

- Twin breather manifold with brass filters and hose barbs
- 2 x barb fittings
- 10m oil resistant hose
- 4 x stainless steel hose clamps
- 2 x self drilling screws
- Cable ties







**MAXIMUM  
STRENGTH**

## UNDERBODY UBP SERIES PROTECTION

THE PREMIUM UNDERBODY PROTECTION SOLUTION TO SAFEGUARD AGAINST OFF-ROAD DAMAGE FROM ROCKS, STUMPS AND GROUND STRIKES

- 4mm fabricated steel
- 3 x more area coverage
- Anti-corrosion coating
- Textured black powdercoated finish
- Airflow ventilation
- Service inspection holes

### UBP TO SUIT:

- Ford Ranger PX/PXII/2011+
- Ford Everest 2015+
- Ford Ranger PXIII
- Isuzu D-Max 2011+
- Isuzu MU-X 2012+
- Mazda BT50 2011+
- Mitsubishi Triton MQ/MR 2015+
- Nissan Navara NP300 2015+
- Toyota Hilux 2005+
- Toyota Fortuner 2015+
- Toyota Prado 150
- Toyota Landcruiser 70 Series



**SALES & FITTING  
AUSTRALIA WIDE**  
THROUGH AUTHORISED OUTLETS



## PROTECTION DOWN UNDER

## UNDERBODY IUP SERIES PROTECTION **GREAT VALUE**

- 2.5-3mm pressed and folded steel
- Easy bolt-on installation
- Semi gloss black powdercoated finish

### IUP TO SUIT:

- Ford Ranger / Mazda BT50 2007+
- Ford Everest 2015+
- Isuzu D-Max 2007 - 2012
- Mitsubishi Triton ML/MN/MQ
- Nissan Navara D40
- Toyota FJ Cruiser 2007+
- Toyota Hilux 2005 - 2015
- Toyota Landcruiser 200
- Toyota Prado 120
- Toyota Prado 150
- Volkswagen Amarok 2009+







## SHOCK ABSORBER SELECTION

IRONMAN 4X4 OFFER THREE RANGES OF SHOCK ABSORBERS. EACH RANGE IS AVAILABLE IN EITHER SOFT COMFORT OR FIRM VALVING.



**GRC**  
NITRO GAS COMFORT

**GR**  
NITRO GAS

### NITRO GAS SHOCK ABSORBER

Highly versatile performance upgrade from original shock absorbers.

- 35mm piston
- 54mm body
- 16mm piston rod
- Nitrogen gas pressurised
- Twin tube construction



**FEC**  
FOAM CELL COMFORT

**FE**  
FOAM CELL

### FOAM CELL SHOCK ABSORBER

Larger size and capacity suitable for all conditions.

- 40mm piston
- 60mm body
- 18mm piston rod
- Foam cell technology
- Twin tube construction



**FEC PRO**  
FOAM CELL PRO COMFORT

**FE PRO**  
FOAM CELL PRO

### FOAM CELL PRO SHOCK ABSORBER

Maximum size and most robust design suitable for all conditions.

- 45mm piston
- 65-72mm body
- 20mm piston rod
- Foam cell technology
- Twin tube construction



## SUSPENSION KIT TYPES



LEAF / LEAF (LL)



COIL / COIL (CC)



STRUT / LEAF (SL)



STRUT / COIL (SC)



TORSION BAR / LEAF (TL)



TORSION BAR / COIL (TC)

Please note: Not all coil springs are available in green and some may be supplied in yellow. Please check before ordering.

## SUSPENSION KITS

Three Shock Absorber Options

MODEL	Type	Nitro Gas Kit	Foam Cell Kit	Foam Cell Pro Kit
<b>TOYOTA</b>				
Landcruiser FJ/BJ 40, 42, 46	LL		✓	
Landcruiser FJ45, 47	LL		✓	
Landcruiser FJ/HJ 60,61,62	LL	✓	✓	
Landcruiser FJ/HJ/HZJ 75	LL	✓	✓	
Landcruiser HZJ 76	CL	✓	✓	✓
Landcruiser HZJ 78/79	CL	✓	✓	✓
Landcruiser HJ/HZJ 80, 105	CC	✓	✓	✓
Landcruiser Prado 90, 95	SC	✓	✓	✓
Landcruiser Prado 120,150	SC	✓	✓	✓
Landcruiser HDJ/UZJ 100 IFS	TC	✓	✓	✓
Landcruiser VDJ/UZJ 200	SC		✓	✓
FJ Cruiser	SC	✓	✓	✓
Hilux (SFA) LN/RN/YN 65, 105, 106	LL	✓	✓	
Hilux (IFS) LN/RN 107,110,111,167	TL	✓	✓	
Hilux Vigo 2005-2016	SL	✓	✓	✓
Hilux Revo 2016+	SL	✓	✓	✓
Fortuner 2005-2015	SC	✓	✓	✓
Fortuner 2016+	SC	✓	✓	✓
<b>NISSAN</b>				
Patrol GU Y60 Wagon	CC	✓	✓	✓
Patrol GU Y61 Wagon	CC	✓	✓	✓
Patrol LDV GU/61	CL	✓	✓	✓
Navara D21	TL	✓	✓	
Navara D22	TL	✓	✓	
Navara D23	SC	✓		✓
Navara D40	SL	✓	✓	✓
NP300 (Leaf)	TL	✓	✓	✓
<b>ISUZU</b>				
KB, RA, RA7	TL	✓		
RG Series 2013+	SL	✓	✓	
MU-X	SC	✓		
<b>CHEVROLET</b>				
Trailblazer 2012+	SC	✓		



MODEL	Type	Nitro Gas Kit	Foam Cell Kit	Foam Cell Pro Kit
<b>FORD</b>				
Courier	TL	✓	✓	
Everest 2016+	SC	✓	✓	✓
Ranger 2007-2010	TL	✓	✓	
Ranger 2011-2015	SL	✓	✓	✓
Ranger 2016+	SL	✓	✓	✓
<b>JEEP</b>				
Cherokee KJ/JJ	CL	✓		
Grand Cherokee WJ	CC	✓		
Wrangler TJ	CC	✓		
Wrangler JK	CC	✓		
<b>LANDROVER</b>				
Defender 90/110/130	CC	✓	✓	
Range Rover/Discovery	CC	✓	✓	
Discovery Series 2/Td5 II	CC	✓	✓	
<b>MAZDA</b>				
Drifter	TL	✓	✓	
BT50 2007-2010	TL	✓	✓	
BT50 2011+	SL	✓	✓	✓
<b>MITSUBISHI</b>				
Pajero NH-NL SWB/LWB (Coil) 91-02	TC	✓	✓	
L200/Triton MJ - MK 98-05'	TL	✓	✓	
Pajero Sport 2009+	SC	✓	✓	
L200/Triton ME - MK	TL	✓	✓	
Triton ML - MN 2006+	SL	✓	✓	
<b>SUZUKI</b>				
Jimny	CC	✓		
<b>OTHER MODELS</b>				
Hyundai Terracan	TC	✓		
Volkswagen Amarok	SL	✓		
Mahindra Scorpio Pik-Up	TL	✓		
Mahindra Scorpio Wagon	TC	✓		
Renault Duster	SC	✓		

ACHIEVE UP TO 50MM LIFT DEPENDING ON MODEL



# EUROPEAN APPROVED SUSPENSION KITS

Australia's leading 4x4 accessory company, Ironman 4x4 has gained formal approval for its range of suspension kits by German TÜV Nord and the German Federal Motor Transport Authority (KBA).

Ironman 4x4 is the first company to successfully receive this approval for the most popular 4x4 pickups sold worldwide.

The approval took more 18 months to achieve the requirements of the most stringent testing and standards.

The approvals cover different 10 vehicles.

For German customers this means that their 4x4's can legally install the **KBA/ABE** certified suspension kit upgrade without requiring annual re-certification.

For other European 4x4 owners the TÜV Nord approval also allows for legal installation and conformity with all national and international road laws.

Ironman 4x4 suspension kits are sold in more than 160 countries and are the choice of original equipment manufactures across the globe.



## MEETS ALL LEGAL REQUIREMENTS FOR USE WITHIN EUROPE.

This outstanding achievement allows Ironman 4x4 distributors to market the Ironman 4x4 suspension programme aggressively and with confidence in the knowledge that the products are legally approved.

Make / Model	TUV	ABE
Toyota Hilux	8115527006	91690
Toyota Prado 150	8115526954	91689
Isuzu D-Max	8115612672	91702
Mitsubishi L200	8114647382	91644
Nissan Navara NP300	8115527010	91688
Ford Ranger	8115612656	91703
VW Amarok	8115612716	91700
Mercedes X-Class	8115612692	91701
Flat Fullback	8114647382	91644
Renault Alaskan	8115527010	91688



**KBA**  
KRAFTFAHRT  
BUNDESAMT

**TÜV  
NORD**

**ABE**  
ALLGEMEINE  
BETRIEBSERLAUBNIS

**TÜV**  
GUTACHTEN





## SUSPENSION ALIGNMENT PRODUCTS



### UPPER CONTROL ARMS

- Optimise wheel alignment at raised ride height
- More clearance for larger tyres and increased lift
- Drop forged alloy construction
- High strength and durable



**NEW**



OEM Compatible Rubber Bushes



OEM Compatible Ball Joint



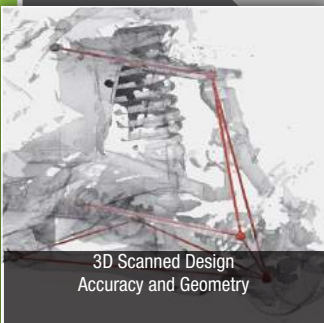
Forged Alloy with High Strength to Weight Ratio



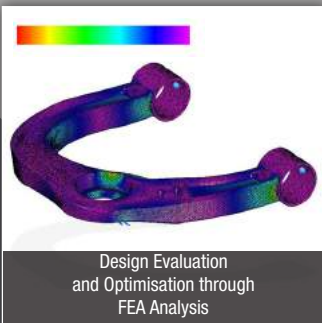
Direct Fitment, no Modification Required

Ironman 4x4 Pro Forge Upper Control Arms allow installation of larger tyres and further increased ride height by providing corrected wheel alignment and greater operating clearance around the arm as is often the limitation when using the OEM upper control arms.

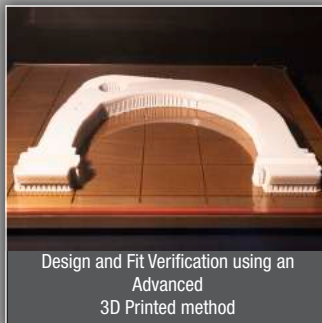
ADR compliant with a 3 Year 60,000km warranty.



3D Scanned Design Accuracy and Geometry



Design Evaluation and Optimisation through FEA Analysis



Design and Fit Verification using an Advanced 3D Printed method

State of the art design and testing ensure every arm is accurate as intended

### SWAY BAR MOUNT KITS

- Stronger than OEM construction
- Stylish anodised billet aluminium design



**NEW**

# ADD-A-LEAF

### SUSPENSION KITS

Ironman 4x4 Add-a-Leaf is a simple, cost effective addition to boost your existing leaf springs

- ✓ Maximises vehicle payload
- ✓ Improves comfort & loading
- ✓ Increases load carrying capability
- ✓ Increases ride height

Available for the following Applications

- Ford Ranger
- Isuzu KB/RG
- Mazda BT50
- Nissan D40 Navara
- Toyota Hilux Vigo
- Toyota Hilux Revo

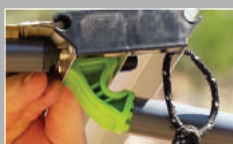




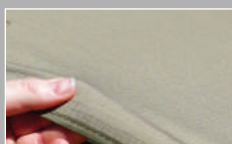


## LED INSTANT AWNING

- Premium 280gsm Ripstop UV50+ rated poly cotton canvas
- Integrated LED light
- Twist lock poles
- Reflective guy ropes
- 1000D PVC cover



Flexible Nylon Joints



Ripstop Canvas



Reflective Guy Ropes



Light Strip Dimmer

AWNING SIZES: 1.4m L x 2.0m Out 2.0m L x 2.5m Out 2.5m L x 2.5m Out

## AWNING ROOM WITH INSECT NETTING

GET THE BEST OF BOTH WORLDS

- An all in one room with insect netting
- Integrated ceiling and zip away PE floor for easy cleaning
- Attaches via any standard sail track, fastening in place via a zip and heavy duty clips
- Integrated external entry mat, insect protection mesh windows and the option of a verandah on each entry with the use of additional poles and guy ropes
- High performance 300D water resistant Ripstop polyester fabric and seam sealed stitching



2.0m L x 2.5m Out

2.5m L x 2.5m Out

## AWNING QUICK RELEASE BRACKET

DESIGN REGISTERED AND MADE IN AUSTRALIA

- Allows you to set up camp and drive away, leaving your awning free standing
- Easily swap awning to a different vehicle
- Allows you to store awning off the vehicle when not in use
- Can be used to mount other accessories, such as tradesman tools
- The extra hook kit allows you to mount your awning for use at home as a shelter over a BBQ area, over the kids play area etc, making your awning multi use
- Fits Ironman 4x4 and most other awnings
- Can be padlocked on for security
- Rated up to 35kg



Quick Release Bracket Hook Kit

- AWNING ROOM ENCLOSURE**
- Fully enclosed extra room with removable floor for easy cleaning
- Integrated ceiling to help control temperature and reduce condensation
- All openings with insect netting and internal covers

1.4m  
2.0m  
2.5m



### AWNING MOSQUITO NET

- Four sides plus enclosed ceiling

NET AND ROOM SIZES:

1.4m Long x 2.0m Out  
2.0m Long x 2.5m Out  
2.5m Long x 2.5m Out

1.4m  
2.0m  
2.5m



## AWNING XTRA

A CONVENIENT ALCOVE

- Built from 280gsm Ripstop poly cotton
- Attaches via any standard sail track
- Gusseted heavy duty clips
- Gusseted eyelets
- UV50+ rated



2.0m L x 1.4m Out

2.5m L x 1.4m Out

All prices quoted do not include freight or fitting. Prices quoted are subject to change without notice. Some products may vary depending on vehicle model.









## LUXURY ROOFTOP TENT



- Premium 280gsm Ripstop poly cotton canvas, waterproof and breathable
- "Climate cover" flysheet controls temperature and reduces condensation
- All openings with insect mesh and internal covers
- 65mm high density luxury foam mattress
- Heavy duty 1000D waterproof transport cover
- Lightweight aluminium and insulated floor
- 1.4m wide x 2.4m long x 1.3m high (Int.dimensions)
- Heavy duty YKK zips

## ANNEX (sold separately)

- Easily zips onto the main tent
- 1000D waterproof PVC built-in removable floor
- All openings with insect netting mesh and internal covers
- Extension kit available



## TOURING CARGO BAG

- Heavy duty, waterproof polyester
- Top and side carry handles
- Durex® buckles



## ROOF TENT BAG

- 1000D waterproof PVC with heavy duty stitching and YKK zips
- Attach and use via any sail track
- Off ground storage

## MULTI-PURPOSE WHEEL CARRIER BAG

- Made super strong from 1000D PVC with drain holes for easy cleaning
- Reinforced 50mm webbing straps



## BUSH TOILET

- Compact design, folds flat
- Galvanised rust-proof steel
- Supports up to 200kg
- Includes carry bag



## BUSH TOILET BAGS

Bio-degradable replacement bags







### DELUXE SOFT ARM CHAIR

- Soft durable arms with high strength steel frame
- Integrated drink holder and insulated pocket in arm
- Handy side utility pocket



### DELUXE LOUNGE CAMP CHAIR

- With extra comfort padding
- Integrated drink holder pocket
- Wide design



### DELUXE HARD ARM CHAIR

- Rear locking tabs lock chair open or closed
- Strong and durable solid arms with high strength steel frame
- Integrated side drink holder



### MID SIZED LOW BACK CAMP CHAIR

- Compact design
- Ideal for festivals and juniors



### QUICK-FOLD CAMPING STEPS

- Non slip glow in the dark treads
- Quick-click double locking legs
- Can be used as entry mat



### QUICK-FOLD TABLE

- Height adjustable
- Carry bag included
- Rated at 50kg



### QUICK-FOLD STRETCHER

#### 2 SECOND SET UP

- Heavy duty material construction
- High strength steel frame
- Integrated foot and head padding
- Includes carry bag



### -5° SWAG BAG

- Large sizing:
- 235cm (L) x 100cm (W)
- 300gsm cotton canvas
- - 5°C temperature comfort rating
- Dual layer 360gsm lofty hollow fibre with baffles
- Zip 2 bags together to make double sized sleeping bag
- Includes duffle carry bag



### SWAGS

- High performance 320gsm Ripstop canvas with insect mesh protection
- Lightweight alloy poles
- 70mm high density mattress
- Internal storage pockets/ external shoe
- Includes heavy duty carry bag



**SINGLE**  
900 x 2100mm

**DOUBLE**  
1350 x 2100mm





### LED TENT LIGHT

- Batteries last up to 30 hours at full charge
- 24 x premium white LED's



### 12V LED LIGHT STRIP

- 1.2m LED light strip
- 3m wire with 12V plug and switch
- 12V socket with battery clips

### LED LIGHT DIMMER

- Adjust brightness of LED light strips



### AWNING 12V LED LIGHT STRIP AND DIMMER SET

- 1.2m LED light strip
- 3m wire with 12V plug and switch
- Attaches via sail track
- Dimmable
- IP68 rated



### MINI LED LANTERN

- Use as a lantern or a torch
- 2 brightness settings, as well as an S.O.S flashing function
- 80m beam distance with CREE LED's



### LED SENSOR HEADLAMP

- 220 lumens with CREE LED's
- Manual or sensor operation
- 120m beam distance



### LED LANTERN

- 80m beam distance with bright white CREE LED's
- Multi-function: White light, red light and small LED's
- Includes a flashing S.O.S operation on both white and red lights



### RECHARGEABLE TENT FAN / LED LIGHT

- Dual speed fan and twin setting LED light
- Up to 16 hours fan speed runtime
- Up to 40 hours runtime LED light
- Soft foam, child safe fan blades
- USB recharging point / USB output hub on rear



### MINI LED LANTERN

- Swivel light operation to make a torch or lantern
- Max 180 lumens
- High or low light

420 LUMENS



### LED WORK LIGHT COMBO (SET OF 2 WORK LIGHTS)

#### FEATURES OF BOTH LIGHTS:

- Magnet for positioning light in work area
- 2 x brightness options, plus a torch function
- Batteries included

#### FEATURES OF LARGER LIGHT:

- USB rechargeable work light



### UNIVERSAL SEAT COVERS

- 100% Nylon universal fit
- Resists mud/grease/water
- Washable





FISH ANYWHERE WITH THE

## TravelMaster Multi-Rod



The ideal lightweight and portable fishing rod, perfect fishing gear for any situation.

Nine different rod styles provides the ideal setup for little river fishing through to surf fishing.

### MALLET, AXE AND AXE/SPLITTER

- Forged carbon steel heads
- Multi-core fiberglass and PVC moulded handle
- Moulded rubber grip for added comfort



TENT PEG MALLET

- Weight: 0.9kg



AXE

- Weight: 0.7kg



AXE / SPLITTER

- Weight: (head) 2.0kg

Also Available

## TravelMaster Multi-Reel

3 Prelined  
Spools  
INCLUDED



### 6 PERSON PICNIC SET

- Insulated cooler bag
- 43 Piece set







## BLAST

7" LED SPOT OR  
SPREAD DRIVING LIGHTS

- 48W LED
- 16 x 3W high output LED chips
- 4800 raw lumens
- IP67 and IP69K rated



## COMET

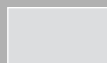
7" OR 9" LED DRIVING LIGHTS

- 30W / 48W CREE LED
- 4000 raw lumens
- IP67 and IP69K rated

## LED LIGHT COVERS

FOR 7" OR 9" LED LIGHTS

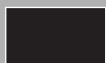
- Shatterproof polycarbonate plastic
- Driving light protection



Protective



Fog



Block Out

## 16W UNIVERSAL LED WORK LIGHT

- 4 x 4W CREE LED
- 80mm (3")
- 720 lumens



## 10W LED WORK LIGHT

- 2 x 5W CREE LEDs
- IP67 and IP69K rated



## 30W UNIVERSAL LED FLOOD OR SPOT

- 3 x 10W CREE LED
- 180mm (7")
- 2700 lumens



## LED LIGHT BARS

- CREE LEDs
- IP67 and IP69K rated
- Multi-Voltage - 10-30Vdc

## STRAIGHT

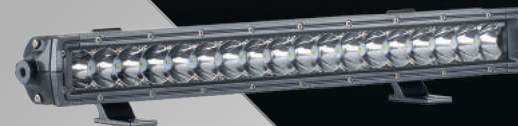
45W - 279mm (11")

3150 Raw Lumens



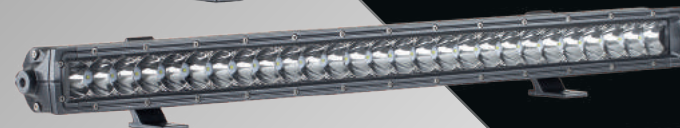
90W - 500mm (19.5")

6300 Raw Lumens



135W - 722mm (28.5")

9450 Raw Lumens

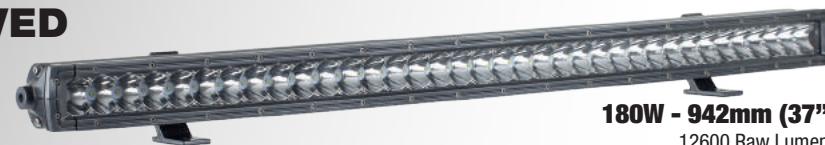


180W - 942mm (37")

12600 Raw Lumens

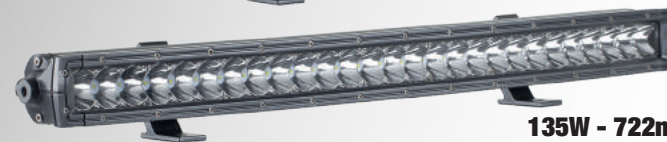


## CURVED



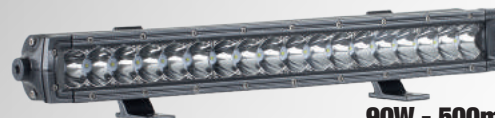
180W - 942mm (37")

12600 Raw Lumens



135W - 722mm (28.5")

9450 Raw Lumens



90W - 500mm (19.5")

6300 Raw Lumens





**NEW**

# NIGHT SABRE



## 7" METEOR LED DRIVING LIGHT

### Features:

- Spot Beam Driving Light
- 48W High Lux Output
- Daytime Running Light Strip
- 4320 Raw Lumens
- 6000K Colour Temperature
- 16 x 3W High Output LED Chips
- Operating Voltage 10-30V DC
- IP67 Waterproof Rated
- Shockproof Polycarbonate Lens
- Diecast Aluminium Bracket
- Diecast Alloy Housing
- Waterproof Deutsch Plug

Includes  
DAYTIME RUNNING  
LIGHT



## 9" METEOR LED DRIVING LIGHT

### Features:

- Spot Beam Driving Light
- 102W High Lux Output
- Daytime Running Light Strip
- 9180 Raw Lumens
- 6000K Colour Temperature
- 34 x 3W High Output LED Chips
- Operating Voltage 10-30V DC
- IP67 Waterproof Rated
- Shockproof Polycarbonate Lens
- 304 Stainless Bracket
- Diecast Alloy Housing
- Waterproof Deutsch Plug

Includes  
DAYTIME RUNNING  
LIGHT



## 7" BLAST PHASE II COMBO LED DRIVING LIGHT

### Features:

- Combo Beam Driving Light
- 48W High Lux Output
- 4320 Raw Lumens
- 6000K Colour Temperature
- 16 x 3W High Output LED Chips
- Operating Voltage 10-30V DC
- IP67 Waterproof Rated
- Shockproof Polycarbonate Lens
- Diecast Aluminium Bracket
- Diecast Alloy Housing
- Waterproof Deutsch Plug



## 7" BLAST PHASE II SPOT LED DRIVING LIGHT

### Features:

- Spot Beam Driving Light
- 48W High Lux Output
- 4320 Raw Lumens
- 6000K Colour Temperature
- 16 x 3W High Output LED Chips
- Operating Voltage 10-30V DC
- IP67 Waterproof Rated
- Shockproof Polycarbonate Lens
- Diecast Aluminium Bracket
- Diecast Alloy Housing
- Waterproof Deutsch Plug

**NEW**



## 5" UNIVERSAL LED LIGHT

### Features:

- 140 Degree Beam Spot
- 61W High Lux Output
- 6540 Raw Lumens
- 6000K Colour Temperature
- 9 x 5W High Output LED Chips
- 8 x 2W High Output LED Chips
- Operating Voltage 10-30V DC
- IP67 Waterproof Rated
- Shockproof Polycarbonate Lens
- Stainless Steel Bracket
- Diecast Alloy Housing
- Waterproof Deutsch Plug



## 3" UNIVERSAL LED LIGHT

### Features:

- 140 Degree Beam Spread
- 30W High Lux Output
- 2850 Raw Lumens
- 6000K Colour Temperature
- 15 x 2W High Output LED Chips
- Operating Voltage 10-30V DC
- IP67 Waterproof Rated
- Shockproof Polycarbonate Lens
- Stainless Steel Bracket
- Diecast Alloy Housing
- Waterproof Deutsch Plug

## LED COSMO LIGHT



### Features:

- 20W High Lux Output
- 2 x 10W Cree-XPL LED Chips
- 4 x Hi and Lo Beam Light Strips
- 2200 Raw Lumens
- 6000K Colour Temperature
- IP67 Waterproof Rated
- Shockproof Polycarbonate Lens
- 304 Stainless Steel Bracket
- Diecast Alloy Housing
- Waterproof Deutsch Plug

## STAR BRITE RECHARGEABLE FLOOD LIGHT



### Features:

- 12V Rechargeable Lithium Battery
- Charging Indicator
- 3 Light Power Settings
- 60 Degree Beam Spread
- Up to 9 Hours Run Time
- 6 x 3W High Output LED Chips
- 6000K Colour Temperature
- IP65 Waterproof Rated
- Shockproof Polycarbonate Lens
- Heavy Duty Base Magnet
- Carry Handle / Stand
- Stainless Steel Bracket
- Diecast Alloy Housing







700 W x 460 D x 410mm H

100L  
CAPACITY

550 W x 460 D x 335mm H

60L  
CAPACITY

140L  
CAPACITY 915 W x 460 D x 440mm H

48L  
CAPACITY 410 W x 410 D x 410mm H

216L  
CAPACITY 1300 W x 460 D x 460mm H

\*Removable storage tray not included

- Manufactured from tough LLDPE UV 3.6mm stabilised plastic
- Dust and water resistant - safe for tools, camping gear and electronic equipment Lockable heavy duty latches
- Heavy duty spring loaded handles / tie down points
- Removable tool / storage tray\* Strap over points for added security when in transit
- Interlocking stackable design



UV50+ Buckles



Heavy Duty Zips



1400L x 500W x 300mm D

200L  
CAPACITY

1100L x 800W x 300mm D

250L  
CAPACITY

1200L x 960W x 300mm D

350L  
CAPACITY

1500L x 1100W x 300mm D

500L  
CAPACITY

1800L x 1100W x 300mm D

600L  
CAPACITY

## WEATHERPROOF ROOF TOP CARGO BAGS

### FREE UP VALUABLE BOOT SPACE

- Weatherproof, reinforced tear resistant fibre, constructed from 500D PVC tarpaulin
- Velcro water resistant zipper overlap provides protective shield from weather
- Heavy duty webbing straps, zips and UV50+ buckles
- Additional straps and buckles at the front reduce flapping and wind noise
- Advanced water resistant welded seams







# COMPLETE VEHICLE SOLUTIONS

- Bullbars
- Monster Winch
- Rated Recovery Points
- Underbody Protection
- LED Driving Lights
- Suspension Upgrade
- Long Range Fuel Tank
- Side Steps and Rails
- Rear Protection Tow Bar
- Airforce Snorkel
- Recovery gear
- Tyre Repair Kits
- Camping Gear

